

THE EPISTLE

JUNE 2025

Somewhere during my childhood I heard the reality-grounded joke that there are two seasons in Michigan: winter and construction. The orange cones popping up remind me that I'm home. So do a lot of other things: long hours of daylight, farm-fresh produce, the lush foliage of my neighborhood street. It's a season that somehow feels like slowing down, even as it welcomes great growth—because after all, construction is a kind of growth, too.



In the Godly Play curriculum, this season of Ordinary Time after Pentecost is sometimes called the “green and growing season.” I’ve always loved that. It reminds us that even when the Church’s calendar isn’t crowded with feast days or special celebrations, this time is far from empty. It’s alive with potential. Like the green color that represents it, this season signals steady life—the kind of quiet, nourished growth that takes root over time.

The name Ordinary Time might sound underwhelming, but it actually comes from the word “ordinal,” meaning numbered or ordered. These weeks are counted—not in the sense of counting down to something better, but in the way a gardener counts rows or a builder tracks progress. It’s time set aside for the long, faithful work of being shaped into disciples. It’s not flashy. But it is a wonderful time to stretch, to experiment, to deepen and renew.

One of the ways I like to mark changing seasons is with some liturgical refreshment—small changes that help keep our worship from becoming rote. I find that even slight shifts in language or melody can help us hear familiar truths with new ears. Just as roadwork slows us down and redirects our path, seasonal changes in the liturgy can reorient us gently toward the presence of God.

To that end, you’ll notice a few updates in the coming weeks. We’ll be moving from the Book of Common Prayer to Enriching Our Worship for parts of the liturgy, including our Eucharistic Prayer. We’ll use different service music, and we’ll pray the contemporary-language Lord’s Prayer. If you were here last summer, some of this may feel familiar as it becomes part of our rhythm, but if it catches you by surprise or feels unfamiliar, that’s okay too.

Like Michigan construction season, liturgical change can be a little messy. It might slow us down or reroute us. And yes, it might be mildly annoying some Sundays. But maybe these shifts are invitations: small opportunities to stretch, to listen differently, to grow.

Change isn’t always comfortable, but it can be faithful. Sometimes all it takes is a new prayer or tune to help us notice something we hadn’t seen in a while. Not because everything needs to be new, but because we are always being renewed. And of course, it’s not just in church where growth happens. Summer is a wonderful time to try something new: a walk in a quiet place, a new prayer practice, a book that challenges or delights you. The long days offer space for curiosity, rest, and spiritual refreshment.

However you move through this season, I hope you’ll come along with us in this green and growing time. You’re always welcome—flip-flops or fancy shoes, old words or new ones—to come as you are, and be met by God.





May Worship Links

Below are direct links to last month's worship services.
If viewing electronically, **click on the date to view the video from that day.**

[3rd Sunday of Easter \(May 4\)](#)
[Holy Eucharist](#)

[5th Sunday of Easter \(May 18\)](#)
[Holy Eucharist](#)

[4th Sunday of Easter \(May 11\)](#)
[Holy Eucharist](#)

[6th Sunday of Easter \(May 25\)](#)
[Holy Eucharist](#)

You can find older services on this page:

<https://www.youtube.com/@st.johnsepiscopalchurchmid8944/streams>

WE APPRECIATE YOUR ONGOING SUPPORT!

St. John's depends on the generosity of our friends and members. Pledges and gifts to St. John's can either be made by check and sent via US Mail to 405 N. Saginaw Rd., Midland, MI 48640, or by visiting tinyurl.com/Give2SJEC. This link will take you to a screen where you will enter the amount of your donation, and

designate a specific purpose or fund. Enter your email address as well, and you'll receive an electronic receipt.



You can also access electronic giving from the upper right-hand corner of our [webpage](#), from the pinned post on our [Facebook page](#), or by pointing your phone's camera to this QR code.



If you have any questions about your continued financial support of St John's, please call the church office and your call will be directed to the appropriate staff person. Thank you for your generosity!

Anna Swartz — “The Wholesome Gardener” Begins Work at St. John’s

by Chris LAUCKNER

Member, Building & Grounds Committee

One special person that any church needs and requires to maintain an onsite garden, is a knowledgeable gardener. Luckily, St. John’s has found a unique find in Anna Swartz who has developed her own business called “The Wholesome Gardener.”

I found Anna to be a charming individual as we took time to sit down and discuss her work and clientele. Anna’s gift is to really get down into the rooted history of an owner’s garden including the type of plantings made over the years. Anna discovers how the owners wish to change their garden[s] given a number of variables. Variables could be the age of existing plants; having sufficient light to grow specific plants/flowers; plants, once easy to grow, are hindered by the shade of developed shrubs or trees so a solution is needed to deal with the situation. Even the amount of time needed for an owner to take care of their garden might have changed. Like the adage states: “None of us are getting any younger!” So, there may be a need to plant less or create raised beds to make it easier to care for them or remove those plantings that are more difficult to care for.

Ms. Swartz delves into areas of a garden that will suit flowering perennials needed for sustainable and native gardens that offer a life cycle of beauty, and encourages pollinators like butterflies, and hummingbirds. Even lightening bugs can have a place in a garden. As Ann describes it: “There has been an evolution in planting over the past 30 to 40 years.”

Anna was home schooled through the sixth grade and attended Midland Public Schools for Junior High and High School. She attended Delta College for two years and went on to Hope College. Anna majored in Photography, minored in French, and received her bachelor’s degree in 2011. Anna went on to secure a position with Dow Gardens following graduation until leaving that position in 2019 during COVID. While at the MCFA, her main responsibilities involved event and program planning, creation of book clubs, and organizing featured shows booked at the Midland Center for the Arts. Anna longed to work outdoors as she discovered her passion for gardening. She did work at “Goodstead Farm” in Hope, Michigan and eventually became a recognized “Master Gardener” through MSU Extension.

We “WELCOME” Anna Swartz as she gains insight into what our congregation, vestry, and rector would like created in our garden spaces. Anna’s talents, creativity, and awareness of our mission and spirituality will be an inspiration to outdoor garden environments.

Anna is a contracted employee and has already been working in the cloister garden on a very part-time basis. She will be suggesting ideas for plantings in other locations of our church campus. Nick Lowthian, Sexton, will be Anna’s contact person while working at St John’s.



Community

G₂ A₁ M₃ E₁

N₁ I₁ G₂ H₄ T₁

Second Friday of each month
Starting June 13th
7-9 pm

St. John's Episcopal Church
405 N Saginaw Rd, Midland, MI



Play our games or bring your favorites! Bring your friends or join in with us! All ages welcome!



Parking at St. John's in June

St. John's is once again partnering with the Dow Championship, providing part of our parking lot & lawn for their use. This will impact parking the last couple weeks of June. Sunday services & other regularly occurring meetings & gatherings will continue as usual. As in the past, parishioners & others who regularly use our facilities are issued window clings for their vehicles allowing for parking in the St. John's lot during this time. If you don't have one already, stop by the office during in-person office hours (9-3, Mon-Thurs; 9-12, Fri) to pick one up. Please join us in welcoming those visiting our community this month, & all those gathered for this LPGA event.



Kevin Maksym will be leading a morning of reflection on the theme of *Love is Everything* on **Saturday, June 21, from 9am-12pm**. Please join us as we experience Christian meditation and share in a teaching and discussion on how *Love is Everything*.

Attention Worship Servers: It's that time again to consider your availability. We'll be scheduling dates from **July 6 through September 28**. Please state your ministry/ministries (greeter/usher, lector, etc.), service times (8 am and/or 10 am) and the Sundays you are NOT available. Please submit to me at my email kbnew40@yahoo.com or place in my mailbox outside of Williams Hall as soon as possible but no later than **Monday, June 16**. Thanking you in advance, *Karen Newhouse*

VACATION BIBLE SCHOOL
TRUE NORTH
Trusting Jesus in a Wild World
July 7-10
2-5 PM
ALL ARE WELCOME!



You otter be here!

New friends ▶ Amazing experiments ▶ Creative games
Super-fun snacks ▶ Surprising adventures ▶ Incredible music

VBS 2025 - TRUE NORTH

Finding your way in a world gone wild.

We have Jesus—our true north! Give kids a rock-solid foundation and point them to Jesus, their unmovable, unshakable friend forever!

Click here to register or point your smartphone camera at the QR code
<https://tinyurl.com/SJECVBS2025>



Email Linda Germain (linda@sjec-midland.org) if you would like to volunteer.

Children & Youth Ministries

May



EYE Youth group had a little busier month of May. We celebrated our youth that will be graduating, blessed our graduates, and enjoyed more *Identity* lessons from our current curriculum. May 11th we honored our graduates who graduated from middle school and high school. Aiden Carter, Mallory Garlinghouse, Brenna Gruhitz, and Grace Robinson graduated from high school. We had Ian Garlinghouse and Logan Stoll graduate from middle school. Good luck to our youth group grads on your next journey, you will do amazing! We hope to see our middle school graduates next year at youth group.

We will be wrapping up the year with an outing for our youth group. We extended into June this year as it worked out for everyone's schedule.

Sunday School was left in the trusted hands of several this May. Alicia led some fun Godly Play stories. Many board games, kinetic sand fun, painting, and coloring were done. Memorial Day weekend we did a quick lesson and then stepped outside to play as it was gorgeous... finally to be able to enjoy some outdoor fun.

We had many preschool and elementary graduates in May. Congratulations to Eloise Dupuis, Chloe Escoffre, Lillian Stoll, Marie Stoll, and Patrick Ward on your achievements. I hope to see our elementary graduates in EYE Youth group in the fall and to see our preschool graduates in Sunday school again in the fall!

We will finish up our year on June 8th with children and youth recognition Sunday.

Starting June 15th we will begin a more relaxed Sunday school and childcare routine for the summer. We will still provide childcare throughout the summer, so bring your kids for some fun activities during church.



I want to send out a huge shout out to Deneé Koonce, Ann Wright, Jess Hart, and the Thompson family for keeping things running in May in Youth group. A huge shout out to Alicia Watt, Emily Garlinghouse, Jenni Stoll, Leah Oard, and Chris Schuster for keeping Sunday school running in May. It wouldn't have all happened without your help! Many may have noticed my absence during Sunday's in May. I have been spending most of that time on the sidelines of

Nathan's travel baseball games or backstage for Abby's dance recital. Many of his tournaments finish up Sunday mornings and early afternoons. Thank you all for supporting my family needs as well as the church needs, I truly appreciate all of you! — Linda Germain

VOLUNTEER

Thursday, June 12, 5 PM to 9 PM - Smiling volunteers willing to say “hi” to young and old, working our St. John’s display table and giving away materials. Each volunteer receives a free ticket to the game!

[CLICK HERE TO SIGN UP](#)



Saturday, June 28 - Smiling volunteers for three 3-hour shifts, willing to say “hi” to young and old, working our St. John’s display table and giving away materials. **NEW location this year:** Jolt Credit Union Event Park, 300 Johnson St., Saginaw, MI 48607.

[CLICK HERE TO SIGN UP](#)

Meijer Simply Give — Spring Campaign

Between **Sunday, March 30, and Saturday, June 28, 2025** stop by Meijer and purchase a \$10.00 Simply Give gift card located near the checkout lanes.

Double Match Day: Saturday June 14. For every \$10.00 donation, Meijer will give an additional \$20.00. Your \$10.00 donation becomes \$30.00 for EFPN.

The Meijer Simply Give program continues to be a huge blessing for SAMS, providing critical funds to purchase essential items not available through the Food Bank. We’re truly grateful for all who support this initiative!



St. Martha’s Guild thanks the people of St. John’s for their generous donations to their Annual Baby Shower! Over 1,000 items were distributed last month to local organizations serving young mothers in need, including Babies Clothed by Faith, Life Clinic and Grace Your Closet.

Thank you!

Diapers
Wipes
Body wash
Lotion
Diaper rash ointment
Towels & wash cloths

Bibs
Burp cloths
Blankets
Crib sheets
Nursing sets
Boppy pillows

Backpack
Sippy cups
Tooth brushes
Nail Clippers
Nursery thermometer
Grooming set

Teethers & pacifiers
Sweaters & Hats
Socks, outfits & onesies
Fitness piano
Teddy bear/cuddle buddie
Books

Women Journeying Together



We have finished our study of Revelation, and, following our annual picnic around the garden, will be on hiatus for the summer. We will resume our studies on September 4 (the Thursday after Labor Day) with a study of Luke's Gospel. Watch for more details in the August Epistle.

Women Journeying Together meets each Thursday afternoon during the school year from 1:00 to about 2:30. We gather in the Activity Room, at the bottom of the stairs across from the church office. We study, share, pray for and with each other, laugh frequently, and occasionally have lunch together. Women of all ages are welcome to join us, for a special study or "forever". If you have questions, please contact me, Marnie Bash, at

Library News

by Marnie Bash

Last month books on the Feature Shelves covered a range of topics on Spirituality; this month the books on the Feature Shelves will be focused on prayer, praying, and some collections of actual prayers.

There are several books to help us get into the habit of regular prayer from Bill Hybels' *Too Busy Not to Pray* to Brian McLaren's *Naked Spirituality*, and Deborah Douglas' *The Praying Life*.

Then there are books on specific types of prayer, for example: Ron DelBene's *The Breath of Life* and Kristen Ingram's *Beyond Words: 15 Ways of Doing Prayer*.

The library also has several books on contemplative prayer. Thomas Keating, one of the leaders of this type of prayer, is the author of *Open Mind, Open Heart* and *Intimacy with God*. *Lectio Divina, the Sacred Art* is by Christine Paintner, and *Centering Prayer* is by Basil Pennington. Finally, Richard Rohr has *Everything Belongs*. If you have a regular habit of prayer, these books might be helpful in deepening that habit.

There are also several collections of actual prayers. One of the very interesting ones is *Women's Uncommon Prayers*, a collection of prayers from women across the Episcopal Church and sorted into appropriate categories – daily life, seasons, Church seasons, etc. Definitely worth taking a look at! Other books include *A Time to Pray*, 365 classic prayers organized by century, and *2000 Years of Prayer* edited by Michael Counsell, also organized into appropriate eras. These last two books are kind of fun just to skim through even if you don't want to use them on a daily basis (they are both set up with a prayer a day for one year!).

And, as usual, there are more books back in the library itself, including a collection of books on *The Lord's Prayer* and a collection of graces and blessings. Learn more this month about prayer, praying, and prayers used through the ages!



The Book of
Common Prayer



1979

BCP Spotlight

by Ellen McVey

Recently in *Women Journeying Together* the question was asked, “How are the Sunday readings selected?”. I realized it had been nearly 3 years since that was addressed in a BCP Spotlight and thought others might also be wondering about this.

The Episcopal Church (TEC) uses a “lectionary”, an ordered system for reading the Holy Scriptures on Sundays, Holy Days, and Various Occasions. Prior to 2007, the eucharistic lectionary was based on the Roman Catholic lectionary developed after Vatican Council II.

In 2006 (effective in 2007), TEC officially adopted the use of The Revised Common Lectionary (RCL) which was developed as a collaborative, ecumenical project. If you use a BCP published before 2007, The Lectionary (pp. 887-931) will follow the Roman version and will not match the current RCL schedule. Only BCP’s published after 2006 may include the RCL version (“traditional” BCP’s are still sold so that is something to be aware of). Significantly, the RCL is used widely around the world and across many other denominations, including United Methodist, Presbyterian (USA), Disciples of Christ, American Baptist, Reformed Church in America, United Reformed Church, Lutheran, United Church of Christ, Unitarian Universalist, and numerous others.¹ So, the RCL connects us to many other Christians as we read and meditate on the same Scripture passages each week.

The readings are arranged in a three-year cycle, referred to as Years A, B, and C. A new year begins on the first Sunday in Advent; we are currently in Year C. Each cycle has a different emphasis. For example, each year focuses on a different Gospel with the Gospel of John being interspersed throughout all 3 years.

Below is a brief overview of each year of The (RCL) Lectionary:²

| | Yr A (Advent 2025-2026) | Yr B (Advent 2026-2027) | Yr C (Advent 2024-2025) |
|---|---|--|--|
| Gospel focus | Matthew | Mark | Luke |
| Old Testament (OT) | Isaiah | various | various |
| Psalm | Selected as a response to the OT reading – not intended as a standalone reading | | |
| New Testament (NT) | Romans, I Corinthians | 1 & 2 Corinthians | 1 Corinthians |
| Easter season Gospel focus | John, Matthew | John, Luke | Luke, John |
| Easter season 1 st reading | Acts | | |
| Easter season NT | Romans, 1 Peter | 1 John | Revelation |
| After Pentecost (Ordinary Time) Old Testament | Genesis, Exodus, Leviticus, Numbers, Deuteronomy, Joshua, Judges | Davidic covenant and Wisdom literature | Elijah, Elisha, Amos, Hosea, Isaiah, Jeremiah, Joel and Habakkuk |
| After Pentecost (Ordinary Time) New Testament | Romans, Philippians, I Thessalonians | 2 Corinthians, Ephesians, Hebrews, James | Galatians, Colossians, 1 Timothy, 2 Timothy, 2 Thessalonians |

Here is a link to the (free!) online BCP where you can easily click on the hyperlink for The Lectionary to find the current Sunday scripture reading <https://www.bcponline.org/> OR go to “Sunday Readings>Preparing for Sunday” on the SJEC homepage, OR look for the “Next Sunday’s Readings” box on each Sunday’s “Announcements” page.

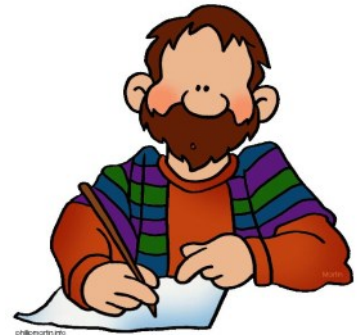
¹<https://www.ashleydanyew.com/posts/how-to-use-the-revised-common-lectionary?format=amp>

²www.ashleydanyew.com

Church History in Three Minutes (or Less)

by Eric Carlson

Last month, I showed that “Protestant” began as a term with narrowly German associations. That’s how the English saw it at the time. At Henry VIII’s funeral in 1547, for example, there was a section of seats for “Protestants and other notable foreigners.” For decades, it was only applied to English people by supporters of the pope, who used “Protestant” as a slur. As late as 1600, theologian Henry Airay described the English church’s position this way: “If we be named after any other name than the name of Christ Jesus, it is through their malice, not our desire.”



In practice, the post-Reformation English church described itself as Catholic, because it followed the ancient Christian creeds (like the Nicene Creed we recite every Sunday), in contrast to the “papists” who had abandoned the true faith to follow new-fangled teachings invented by popes. To be *both Catholic and Reformed* was not in any sense considered inconsistent. Gradually, in the 1580s and 1590s, it became more acceptable to embrace the Protestant label. Foreign affairs had a lot to do with that. Since the pope had excommunicated Queen Elizabeth in 1571, ordering her deposed and making clear that killing her was no sin, England knew who its friends were. Its allies were territories with major disagreements on issues like the nature of the Lord’s Supper and how to structure their churches, but none were loyal to Rome. “Protestant” was a handy umbrella term for them. By the 1590s, “Protestants” had a radically new common definition. Theologian Andrew Willet considered them those who “profess the Gospel of Jesus Christ and have rejected the jurisdiction of the see of Rome,” concluding that “the name of Protestant we refuse not.” In 1624, Daniel Featley defined Protestants as those who followed early Christian doctrine; for him, Protestant was a synonym for Christian.

In 1698, novelist Daniel Defoe wrote that “the name of Protestant is now the common title of an Englishman.” Interestingly, to this day no statement by Church or State in England has made that official. Not so here. Since Anglican bishops and priests have to swear allegiance to the English monarch (still officially head of the Church of England), American political independence required establishing an autonomous church. When our denomination formally took shape in the 1780s, it was officially called the Protestant Episcopal Church, as it legally is today.

Men’s Breakfast — Monday, July 7, 8:00 AM

fellowship

Join us at the Big Boy Restaurant at 1513 S. Saginaw Rd. for our monthly **Men’s Breakfast**. Once in the restaurant, walk through the big room to the smaller room located at the southeast end of the restaurant to find our table.

JOIN US for food and fellowship!!



Each month the *Prayer Corner* includes the church's prayer list as well as the anniversaries and birthdays for the month. The prayer list is updated weekly and included in the Sunday morning worship service bulletins, along with the *Daily Prayers for the Wider Church*. The most recent version can be found at any time by clicking the "Announcements" link on the SJEC web page:

<https://www.sjec-midland.org/>



Please keep the following people in your prayers...

Cathy Chang & Juan Lopez, Susan & Bob, Dean, Char Bakeman, Betty Kirkley, Ronnie, Henry Youngquist, Chris, Yvonne, David, Paul, Linda & Dan, and Carolyn.

Contact the church office
631-2260 / office@sjec-midland.org

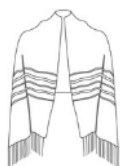
- to add someone to the prayer list
- inform us of your marriage date
- inform us of your birth date
- inform us if you've been baptized

Give thanks with those celebrating June Birthdays...

| | |
|----------------------------|----------------------|
| 1 - Liz Davis | 18 - Gordon Thompson |
| 2 - Preston Jones | 19 - Denny Morden |
| 7 - Charlotte Jacqmain | 21 - Roger Bryant |
| 8 - Jessica Davis | Dave Schafer |
| Nykkoa Lurie | Susie Staloch |
| 11 - Matthew Barnes | 23 - Emmet Engwis |
| 13 - Tom Webb | 25 - Melanie Massey |
| 16 - Stephen Jacqmain | 26 - Ann Wright |
| 17 - Rachelle Miller | 27 - Gail Hoffman |
| Logan Stoll | 28 - Deborah Randall |
| 18 - Sangeeta Mukhopadhyay | 30 - August Anderson |

Give thanks with those celebrating June Anniversaries...

| | |
|------------------------------|-------------------------|
| 10 - John & Jan Marcou | 24 - Lee & HJ Smith |
| 16 - Mike & Susie Staloch | 26 - Bruce & Judy Ellis |
| 17 - Roger & Deanna Bryant | |
| 18 - Basil & Margaret Clark | |
| Ralph & Sue Rye | |
| 19 - Mike & Cathy Strong | |
| 22 - Jim & Charlotte Bakeman | |
| Fred & Alice Stoll | |
| 23 - Ernest & Linda Carter | |



Members of the congregation who have received Pastoral Care training are available all year for friendly visits. Members who are in the hospital, nursing homes, or homebound may request a visit from our team to receive communion, a comforting prayer shawl or a pocket cross.

Team members include:

The Rev. Alissa Anderson and parishioners

Chris Esquivel

Pat Roush

Chris Lauckner

Chris Schuster

Jan Marcou

Fred Schuster

Call the parish office (989-631-2260) with a pastoral care request. In the case of a pastoral emergency outside office hours, please contact **The Rev. Alissa Anderson** at 616-540-9102 (cell).



LEARNING TREE
COOPERATIVE PRESCHOOL
Where a love of learning takes root

Exciting News from the Preschool!



We are thrilled to announce that Ms. Jenni will be moving up as our new Director and Lead Teacher in the Pre-Kindergarten classroom. Her dedication and heart for children have been a true blessing, and we are excited to see her step into this leadership role.

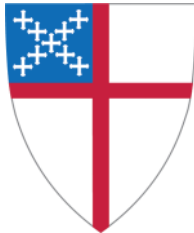
Additionally, Ms. Colleen will be stepping up as the Lead Teacher in the Early Learners classroom. Her enthusiasm and love for nurturing young minds make her the perfect fit for this important position.

We are truly excited about the future of our Preschool and the wonderful things to come with our amazing team!

We're Hiring! Learning Tree Cooperative Preschool is looking for a caring and reliable Assistant Teacher to join our team. We're also seeking someone enthusiastic and energetic to lead our Twos & You program. If you have a heart for young children and a passion for early childhood education, we'd love to hear from you! Please contact Jenni Stoll at msjenniltcp@gmail.com.

We look forward to hearing from you!

| | | |
|---|--|--|
| <p>How to Connect with Rev. Alissa</p> | <p>Schedule a time via Calendly</p> <p>CLICK HERE</p>  | <p>Drop in Coffee Shop Office Hours Thurs., 9-11 AM. This month you'll find her at Grove Tea Lounge (2405 Abbott Rd.)</p>  |
|---|--|--|



HEAD OF THE CHURCH - JESUS CHRIST
MINISTERS - ALL OUR MEMBERS

To get in touch with any Clergy, Staff Member or Member of the Vestry, call or email the parish office:

(989) 631-2260
office@sjec-midland.org

OUR VESTRY - OUR ELECTED LEADERS

Clergy

The Rev. Allissa G. Anderson *Rector*
Jess Hart *Seminary Intern*

Staff

Dr. Amon Eady *Director of Music*
Travis Fader *Organist*
Linda Germain *Children & Youth Director*
Colleen O'Dell *Bookkeeper*
Ellen Woodard *Administrative Assistant*
Nick Lowthian *Sexton*
Vickie Densmore *Janitor*

Class of 2026

Deb Blackhurst
Angela Garcia, *Co-Warden*
Gail Hoffman

Class of 2028

John Adams
Doug Germain
Ann Wright

Class of 2027

Eric Heglin, *Clerk*
Susan Rye
Fred Schuster, *Co-Warden*

WEEKLY OPPORTUNITIES AT ST. JOHN'S

Sunday

8:00am Holy Eucharist..... Sanctuary
 9:00am Fellowship Hour..... Williams Hall
 10:00am Holy Eucharist..... Sanctuary & Facebook
 11:00am Fellowship Hour..... Williams Hall
 11:30am Handbell Choir..... Bell Zone
 5:00pm NA..... McNab Room
 7:00pm Bible in the Basement (1st & 3rd)..... Activity Rm

Monday (Parish Office open 9am-3pm)

12:00pm AA..... McNab Room
 6:00pm Pop up Bible Study..... Library

Tuesday (Parish Office open 9am-3pm)

10:00am Samaritan Fund Clients..... Library
 1:00pm Knitpickers..... Williams Hall



Wednesday (Parish Office open 9am-3pm)

10:30am Women's Bible Study..... McNab Room
 12:00pm Holy Eucharist.... Chapel (use office entrance)
 1:00pm AA..... McNab Room
 5:30pm Tai Chi in the Garden..... Courtyard
 6:30pm Christian Meditation..... Activity Room

Thursday (Parish Office open 9am-3pm)

10:00am Love Knots (2nd & 4th)..... Williams Hall

Friday (Parish Office open 9am-noon)

12:00pm AA..... McNab Room
 5:45pm Peer Support Meeting..... McNab Room

Saturday

12:00pm AA..... McNab Room
 7:00pm NA..... McNab Room



The 10:00 am worship service is livestreamed on YouTube. At the time of the service, go to: <https://www.youtube.com/@st.johnsepiscopalchurchmid8944/streams>. A live service will have a prominent "LIVE" badge on the video thumbnail or title indicating the video is currently being streamed live. Previous services can also be viewed here at any time.

*We joyfully gather to pray, worship, learn and serve as we seek to follow Jesus,
 and invite all to join us on a sacred journey of hope and transformation.*

The next edition of **The Epistle** will be published in early July. The final deadline for submissions is Friday, July 4. Please consider submitting stories of your group's activities, or news of coming events and activities.

If you are not currently receiving an email notice to tell you that **The Epistle** has been published on our website, and you would like to receive one, please email office@sjec-midland.org.

If you prefer a printed copy of The Epistle, they are available in the church office, the narthex and each entrance into the church building.



ST. JOHN'S EPISCOPAL CHURCH
linking lives in the love of Christ



St. John's Episcopal Church

405 N. Saginaw Road • Midland, MI • 48640

(989) 631-2260 • office@sjec-midland.org

www.sjec-midland.org

Rector - The Rev. Alissa G. Anderson



facebook

www.facebook.com/sjecmidland



www.instagram.com/sjecmidlandmich